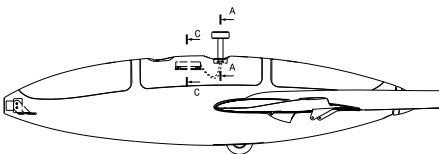
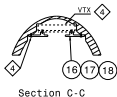
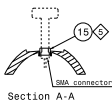
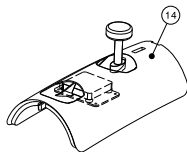
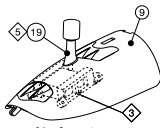


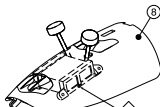
ANALOG FPV SYSTEM



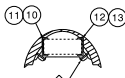
DIGITAL FPV SYSTEM



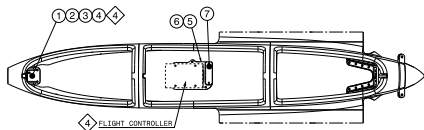
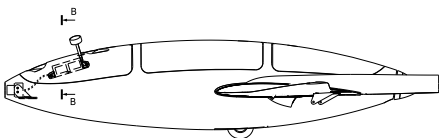
Single antenna



Double antenna



Section B-B



ITEM	NAME	CATEGORY	CREATION DATE
1	Cam_holder_20x20_2holes	C	April 14, 2023
2	Cam_holder_20x20	C	April 14, 2023
3	Cam_holder_17x17	C	April 14, 2023
4	Cam_holder_14x14	C	April 14, 2023
5	FC_holder_24x24	C	April 14, 2023
6	FC_holder_30x30	C	April 14, 2023
7	FC_clamp	C	June 29, 2023
8	Canopy_1_fpv_DJI_AU	A	April 14, 2023
9	Canopy_1_fpv	A	April 14, 2023
10	DJI_AU_Holder_L	C	April 14, 2023
11	DJI_O3_Holder_L	C	April 14, 2023
12	DJI_AU_Holder_R	C	April 14, 2023
13	DJI_O3_Holder_R	C	April 14, 2023
14	Canopy_2_FPV	A/A-LW	April 14, 2023
15	Analog_antenna_holder	C	April 14, 2023
16	VTX_holder_20x20	C	April 14, 2023
17	VTX_holder_25,5x25,5	C	April 14, 2023
18	VTX_holder_30,5x30,5	C	April 14, 2023



PRINTING PARAMETER	CATEGORY		
	A-LW	A	C
Layer height (mm)	0.25	0.2	0.13
Bottom layers	0	0	4
Top layers	0	0	6
Wall lines / perimeter	1	1	2
Nozzle diameter (mm)	0.4	0.4	0.4
Material	LW-PLA	PLA/PETG	PLA/PETG FLEX/ABS
Infill density (%)	0	0	10
Printing temp (°C)	235	220	205 to 240
Bed temp (°C)	60	60	60
Flow (%)	53	100	100
Retraction (mm)	0,5 to 3	0,5 to 3	3
Retraction extra prime amount (mm)	0 to 0,7	0 to 0,7	0
Speed (mm/s)	55	50	25 to 50
Fan	YES	YES	YES
Brim (mm)	3 to 5	3 to 5	0 to 3
Minimum layer time (s)	5	5	5
Support	NO	NO	NO

5 Fixed in place with cyanoacrylate glue.

4 Fixed in place with screws M2.

3 Arrow is placed in the lower area and pointing forward.

2 It is recommended to print it with a heat resistant material (PETG, ABS...)

1- Red parameters are mandatory to ensure airplane functionality, assembly or weight target.